

## Innuttaqqortusiartorneq – naalagaaffinnilu allani innuttaasuneersut amerlisut

Kalaallit Nunaanni 1. januar 2011 inuit 56.615-it najugaqarput. Taamaalilluni 2010-p ingerlanerani innuttaasut 163-nik amerleriarput.

### Takussutissiaq 1 Innuttaasut 1. januar 2002-miit -2011-mut

	2002	2003	2004	2005	2006	2007	2008	2009	2010	2011
Tamarmik	56.542	56.676	56.854	56.969	56.901	56.648	56.462	56.194	56.452	56.615
Angutit	30.180	30.249	30.335	30.319	30.182	30.005	29.885	29.809	29.936	29.942
Arnat	26.362	26.427	26.519	26.650	26.719	26.643	26.577	26.385	26.516	26.673

Najoqqutaq: Kalaallit Nunaanni Naatsorsueqqissaartarfik, <http://bank.stat.gl/benst1>

Kommune Kujallermi innuttaasut suli ikiliartorput, akerlianik Kommuneqarfik Sermersuumi innuttaasut amerliartupiloorlutik. Kommuneqarfinni allani marlunni innuttaasut taamaginnartut.

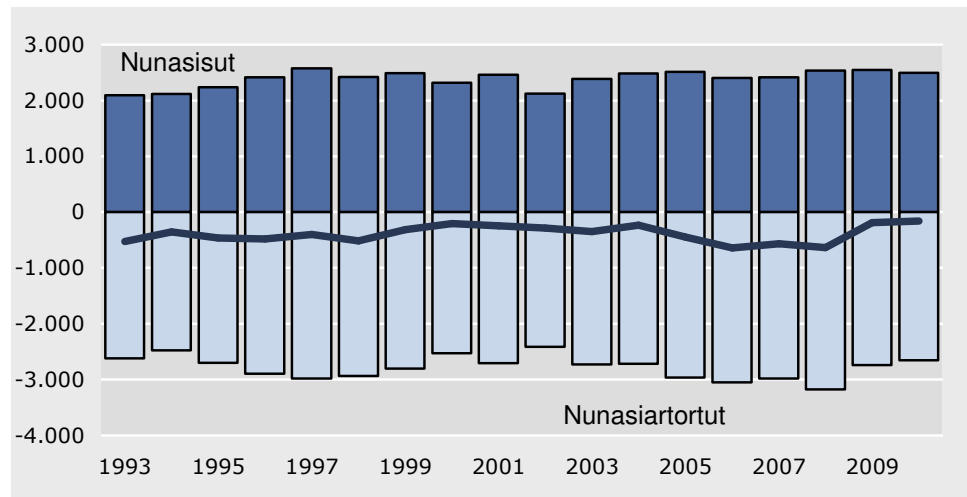
### Takussutissiaq 2 Nunap inui kommunini 2011

	-16	17-64	65+	Angutit	Arnat	Tamar- mik 2010	Tamar- mik 2011	Ukiup siulianit nikingas- sut
Tamarmik	13.581	39.087	3.947	29.942	26.673	56.452	56.615	163
Illoqarfik	11.236	33.300	3.321	25.125	22.732	47.434	47.857	423
Nunaqarfik	2.251	5.380	608	4.461	3.778	8.477	8.239	-238
Stacioni	33	288	4	243	82	327	325	-2
Savaateqarfik	58	102	12	98	74	172	172	-
Nalunaarneqanngitsoq	3	17	2	15	7	42	22	-20
Kommuni Kujalleq	1.705	5.033	703	3.944	3.497	7.589	7.441	-148
Illoqarfik	1.437	4.276	560	3.279	2.994	6.352	6.273	-79
Nunaqarfik	210	656	130	568	428	1.064	996	-68
Stacioni	-	-	-	-	-	-	-	-
Savaateqarfik	58	98	11	95	72	169	167	-2
Nalunaarneqanngitsoq	-	3	2	2	3	4	5	1
Kommuneqarfik Sermersooq	5.115	15.331	1.113	11.363	10.196	21.232	21.559	327
Illoqarfik	4.640	14.282	997	10.461	9.458	19.487	19.919	432
Nunaqarfik	442	925	115	795	687	1.582	1.482	-100
Stacioni	33	120	-	104	49	160	153	-7
Svaateqarfik	-	4	1	3	2	3	5	2
Nalunaarneqanngitsoq	-	-	-	-	-	-	-	-
Qeqqata kommunia	2.286	6.703	695	5.160	4.524	9.677	9.684	7
Illoqarfik	1.946	5.670	629	4.348	3.897	8.244	8.245	1
Nunaqarfik	340	1.033	66	812	627	1.433	1.439	6
Stacioni	-	-	-	-	-	-	-	-
Savaateqarfik	-	-	-	-	-	-	-	-
Nalunaarneqanngitsoq	-	-	-	-	-	-	-	-
Qaasuitsup kommunia	4.472	11.838	1.432	9.323	8.419	17.749	17.742	-7
Illoqarfik	3.213	9.072	1.135	7.037	6.383	13.351	13.420	69
Nunaqarfik	1.259	2.766	297	2.286	2.036	4.398	4.322	-76
Stacioni	-	-	-	-	-	-	-	-
Savaateqarfik	-	-	-	-	-	-	-	-
Nalunaarneqanngitsoq	-	-	-	-	-	-	-	-
Kommunit avataanni	3	182	4	152	37	205	189	-16

Najoqqutaq: Naatsorsueqqissaartarfik, <http://bank.stat.gl/benst2>

Ataani titartakkap takutippaa 1993-miit – 2010-mut nuttarnerup allanngorarnera. Piffiup pineqartup ingerlanerani ukiut tamaasa inuit arlallit Kalaallit Nunaanniit nuuttarput nunasisunit amerlanerusut. Ukioq 2010-mi inuit 2.491-t nunasipput 2.651-silli nunatsinnit nuullutik. Taama takusinnaanngorparput ukioq 2010-mi nuuttut ataatsimut 160-iusimasut, ukiumut siulianut naleqqiullugit malunnartumik ikinnerullutik, 1988-miilli aatsaat taamak ikitsigalutik.

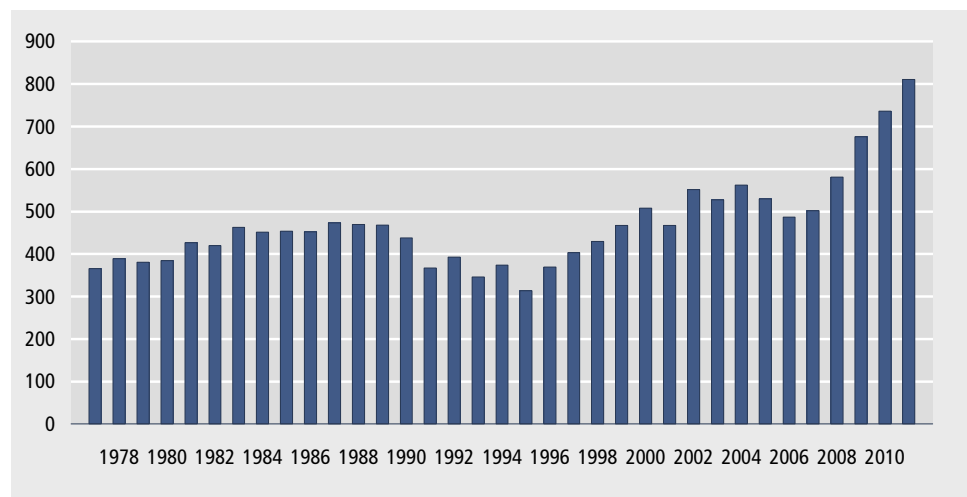
**Titartagaq 1. Nuttarnerit 1993-miit – 2010-mut**



Najoqutaq: Naatsorsueqqissaartarfik, <http://bank.stat.gl/benbbiu2>

Nuuttut ikinnerunerannut ilaatigut peqqutaavoq naalagaaffinniit allanit innuttaasut nunatsinnut nunasinerat.

**Titartagaq 2 1977-miit – 2011-mut nunani allani innuttaassusillit amerlassusaat**



Najoqutaq: Kalaallit Nunaanni Naatsorsueqqissaartarfik, <http://bank.stat.gl/benst6>

Ukiut tallimat kingulliit nunani allani innuttaassusillit amerlassusaat 309-nik qaffariroq, 2007-mi 502-iulluni, 1. januar 2011-milu 811-nik qaffariarfiulluni (62 pct.).

### Takussutissiaq 3 2007-miit – 2011-mut nunani allani innuttaassusillit amerlassusaat

	2007	2008	2009	2010	2011
Europami Amerikamilu avannarlermi innuttaasut					
Tamarmik	371	424	505	510	529
Angutit	251	294	360	364	360
Arnat	120	130	145	146	169
Allatut innuttaassusillit					
Tamarmik	131	157	171	226	282
Angutit	47	58	69	87	117
Arnat	84	99	102	139	165

Najoqutaq: Naatsorsueqqissaartarfik, <http://bank.stat.gl/benst6>

Naatsorsuutaagallartut tunngavigalugit 2010-mi innuttaasut ineriartorneranni uumallutik inunngortut toqusullu amerlassusaasa kisitsisitaat takussutissiami 4-mi takuneqarsinnaapput.

### Takussutissiaq 4 2010-mi innuttaasut ineriartornerat

Inuit amerlassusaat 1. januar 2010	56.452
+ uumallutik inunngortut (kisitsisaagallartut)	868
- toqusut amerlassusaat (kisitsisaagallartut)	504
+ nunasisut amerlassusaat	2.491
- nuuttut amerlassusaat	2.651
- naqqiineq	41
Inuit amerlassusaat 1. januar 2011	56.615

Peqqissaartumik tabeliliat Kisitsisaasivimmi nassaarineqarsinnaapput (<http://bank.stat.gl>)

### Imaat

#### Inuit amerlassusaat

<http://bank.stat.gl/BENST1>

1. Januarimi innuttaasut 1977-2011 - piffissaq, najugaqarfik, utoqqaassuseq, suaiaassuseq, inunngorfik

<http://bank.stat.gl/BENST2>

Innuttaasut kommuneni 1977-2011 - piffissaq, kommune, najugaqarfik, utoqqaassuseq, suaiaassuseq, inunngorfik

<http://bank.stat.gl/BENST3>

Innuttaasut distriktini 1977-2011 - piffissaq, distriktimi, najugaqarfik, utoqqaassuseq, suaiaassuseq, inunngorfik

<http://bank.stat.gl/BENST4>

Innuttaasut lokalitetini 1977-2011 - piffissaq, lokalitetimi, utoqqaassuseq, suaiaassuseq, inunngorfik

<http://bank.stat.gl/BENST5>

1. Januarimi innuttaasut 1977-2011 - piffissaq, najugaqarfik, utoqqaassuseq, suaiaassuseq, inunngorfik, inuttut inissisimaneq

<http://bank.stat.gl/BENST6>

1. Januarimi innuttaasut 1977-2011 efter innuttaassuseqarneq, utoqqaassuseq, suaiaassuseq

<http://bank.stat.gl/BENSAT1>

Inuit amerliartornerilu 1901-2011

<http://bank.stat.gl/BENSAT2>

Inuttussutsip allannguutai 1950-2010

#### Inunngortut

<http://bank.stat.gl/BENBBL0>

(Revised) Livebirth najugaqarfik, mothers place of birth, mothers utoqqaassuseq, suaiaassuseq and month of birth 1973-2010

<http://bank.stat.gl/BENBBL3ULT>

Live birth by district, mothers place of birth, ultimo ultimo age and gender 1973-2010

<http://bank.stat.gl/BENBBLM1>

Livebirth and mean population by najugaqarfik, mothers place of birth and age 1977-2010

<http://bank.stat.gl/BENBBLM2>

Live birth and mean population by municipality, residence, mothers place of birth and age 1977-2010

<http://bank.stat.gl/BENBBLM3>

Live birth and mean population by district, mothers place of birth and age 1977-2010

<http://bank.stat.gl/BENBBLM4>

Live birth and mean population by locality, mothers place of birth and age 1977-2010

---

## Toqusut

<a href="http://bank.stat.gl/BENBBDM1">http://bank.stat.gl/BENBBDM1</a>	Toqusut by najugaqarfik, inunngorfik, utoqqaassuseq and suaassuseq 1977-2010
<a href="http://bank.stat.gl/BENBBDM2">http://bank.stat.gl/BENBBDM2</a>	Toqusut by kommune, najugaqarfik, inunngorfik, utoqqaassuseq and suaassuseq 1977-2010
<a href="http://bank.stat.gl/BENBBDM3">http://bank.stat.gl/BENBBDM3</a>	Toqusut by distrikt, najugaqarfik, inunngorfik, utoqqaassuseq and suaassuseq 1977-2010
<a href="http://bank.stat.gl/BENBBDM4">http://bank.stat.gl/BENBBDM4</a>	Toqusut by lokalitet, najugaqarfik, inunngorfik, utoqqaassuseq and suaassuseq 1977-2010

---

## Nuuttarnerit

<a href="http://bank.stat.gl/BENBAF2B">http://bank.stat.gl/BENBAF2B</a>	Nuuttut by kommuner, type, suaassuseq, inunngorfik and utoqqaassuseq 1993-2010
<a href="http://bank.stat.gl/BENBAF3B">http://bank.stat.gl/BENBAF3B</a>	Nuuttut by distrikter, suaassuseq, inunngorfik and utoqqaassuseq 1993-2010
<a href="http://bank.stat.gl/BENBAF4B">http://bank.stat.gl/BENBAF4B</a>	Nuuttut lokalitet, suaassuseq, inunngorfik 1993-2010
<a href="http://bank.stat.gl/BENBBAF2">http://bank.stat.gl/BENBBAF2</a>	Netmigrations by kommune, suaassuseq, inunngorfik and utoqqaassuseq 1993-2010
<a href="http://bank.stat.gl/BENBBAF3">http://bank.stat.gl/BENBBAF3</a>	Netmigrations by distrikt, suaassuseq, inunngorfik and utoqqaassuseq 1993-2010

---

## Angallannerit

<a href="http://bank.stat.gl/BENBBIU2">http://bank.stat.gl/BENBBIU2</a>	Nuunnerit kommunemi, utoqqaassuseq, suaassuseq, inunngorfik 1993-2010
<a href="http://bank.stat.gl/BENBBIU3">http://bank.stat.gl/BENBBIU3</a>	Nuunnerit distrikt, utoqqaassuseq, suaassuseq, inunngorfik 1993-2010
<a href="http://bank.stat.gl/BENBBIU4">http://bank.stat.gl/BENBBIU4</a>	Nuunnerit kommunemi, utoqqaassuseq, suaassuseq, inunngorfik 1993-2010

---

## Inoqtigiit

<a href="http://bank.stat.gl/BENHUS1">http://bank.stat.gl/BENHUS1</a>	Inoqtigiit nunap immikkoortuini 1. januar, najugaqarfik, angissuseq 1994-2011
---	---

---

---

Ilisarnaatinut nassuiaatit:

- ... Paasissutissaqanngilaq
- .. Paasissutissat nalunaarutiginnissaanut nalorninartoqarpallaarput imaluunniit ilisarnarpallaarput
- . Kisitsitaqarsinnaanngilaq
- 0 Angissutsip affaanit mikineruvoq
- Nul
- \* Kisitsisaagallartut imaluunniit kisitsisit missingersuutit

Saaffigineqarsinnaasoq

Lars Pedersen

E-mail: [larp@stat.gl](mailto:larp@stat.gl)

Innuttaasut 2011:01

Ulloq saqqummersitsivik

7. marts 2011

---

Kalaallit Nunaanni Naatsorsueqqissaartarfik  
Postboks 1025 · 3900 Nuuk  
Tlf.: 36 23 60 · Fax: 36 23 61  
[www.stat.gl](http://www.stat.gl) · e-mail: [stat@stat.gl](mailto:stat@stat.gl)

